


# CLOUD PAINTABLES

Cloud Paintables™ are a collection of shaped acoustic panels that can be used as ceiling clouds, baffles or wall panels to reduce reverberation and improve intelligibility. The unique shapes and sizes allow architects, designers and installers to come up with creative solutions that are bold and architecturally pleasing.

The range includes the circular Cirrus™, the hexagonal Hexus™ and the square Altos™, each available in 36" (914mm) or 48" (1219mm) diameters. Panels are constructed from 1.5" (38mm) thick high-density (6pcf/96kg/m<sup>3</sup>) glass wool for exceptionally even absorption across all frequencies. Paintables are completely encapsulated in micromesh with resin-hardened edges, and are factory finished on all sides in Absolute White™ latex. Unique to their design is a proprietary textured surface that enables one to lightly spray paint the panels to match room colors and décor without affecting performance. All panels have been tested for fire safety according to ASTM E84, CAN/UL S102 and EN 13823 for use in installations worldwide. 2 panels per box with mounting hardware.

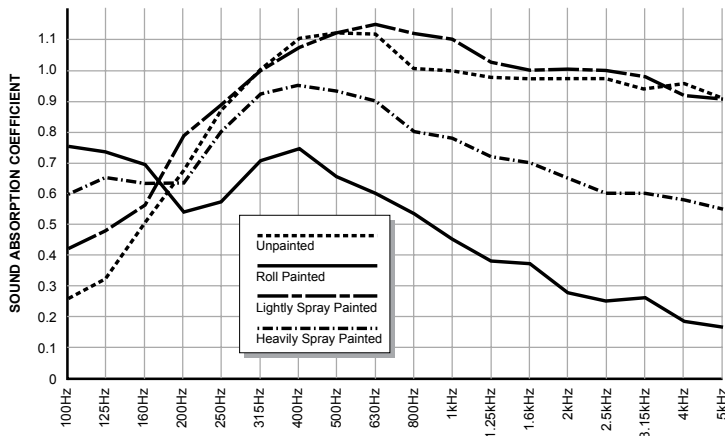
<b>COLOR</b>	Absolute White™
<b>THICKNESS</b>	1.5" (38mm)
<b>CORE MATERIAL</b>	Formed, semi-rigid inorganic glass fibers, 6.0 lbs pcf (96 kg/m <sup>3</sup> )
<b>FABRIC FACING</b>	Glass wool tissue micromesh sealed with water based latex paint
<b>MOUNTING</b>	Helix™, SlipNot™, Eye-Hook and Drywall Anchors included
<b>RECYCLED CONTENT</b>	Up to 40 %
<b>LEED ELIGIBLE</b>	Yes 

## ABSORPTION CHARACTERISTICS:\*

Sound absorption coefficient data for 1.5" (38mm) panels

	125Hz	250Hz	500Hz	1kHz	2kHz	4kHz	NRC
Unpainted	0.32	0.87	1.11	1.04	0.96	0.96	1.00
Rolled Paint	0.74	0.58	0.66	0.45	0.25	0.17	0.50
Light Spray Paint	0.48	0.89	1.12	1.10	1.00	0.92	1.05
Heavy Spray Paint	0.65	0.80	0.93	0.78	0.65	0.58	0.79

\* Testing performed by Riverbank Acoustical Laboratories. The test method conform explicitly with the requirements of the ASTM Standard Test Method for Sound Absorption and Sound Absorption Coefficients by the Reverberation Room Method: ASTM C 423-02a and E795-05.



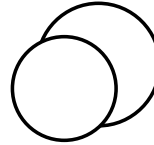
## PAINTABLES FIRE & BURN PERFORMANCE:

COUNTRY	TEST STANDARD	CLASSIFICATION
Canada	CAN/ULC-S102-10	Class A/1
USA	ASTM E84-11b	Class A/1
Europe	EN 13501-1	B-s2, d0
Australia / New Zealand	AS/NZS 1530.3	(I)0, (S)0, (H)0, (Sm)3



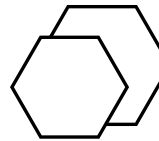
### Cirrus™

<b>ORDER NUMBER</b>	P250-1100-09	P250-1102-09
<b>DIMENSION</b>	36" (914mm)	48" (1219mm)
<b>WEIGHT</b>	7.4lbs (3.4kg)	13.6lbs (6.2kg)
<b>SURFACE AREA</b>	7ft <sup>2</sup> (0.65m <sup>2</sup> )	12.6ft <sup>2</sup> (1.17m <sup>2</sup> )



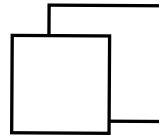
### Hexus™

<b>ORDER NUMBER</b>	P250-1104-09	P250-1106-09
<b>DIMENSION</b>	36" (914mm)	48" (1219mm)
<b>WEIGHT</b>	6.2lbs (2.8kg)	10.9lbs (4.9kg)
<b>SURFACE AREA</b>	5.7ft <sup>2</sup> (0.53m <sup>2</sup> )	10.34ft <sup>2</sup> (1.06m <sup>2</sup> )



### Altos™

<b>ORDER NUMBER</b>	P250-1108-09	P250-1110-09
<b>DIMENSION</b>	36" (914mm)	48" (1219mm)
<b>WEIGHT</b>	11lbs (5.1kg)	17lbs (7.7kg)
<b>SURFACE AREA</b>	9ft <sup>2</sup> (1.48m <sup>2</sup> )	16.4ft <sup>2</sup> (1.48m <sup>2</sup> )



## INCLUDED HARDWARE :



SlipNot™  
Suspension  
Cable



Helix™  
Anchor



Eye-Hook



Drywall/  
Masonry  
Anchors

## HEXUS IN A LOBBY

